



2025 Santa Cruz Wharf End Interim Repair Project Communications Team Weekly Update



Bents 167-171 Post Collapse



Bents 167-171 End Interim Repair

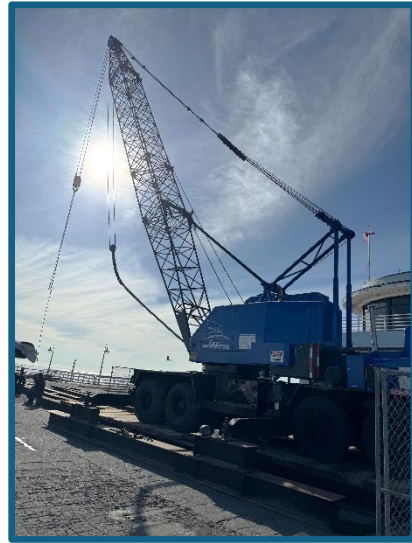
Dec. 15, 2025 through Dec.19, 2025

- ☒ Crane completes transit from southern California to Santa Cruz.
- ☒ Contractor mobilizes crew and equipment and sets up construction fencing around job site.
- ☒ Piles moved from Wharf Pile Yard to job site.
- ☒ Crane deploys to staging area on Wharf.
- ☒ Crane “walks-out” to first pile driving location.
- ☒ Opening of deck and preparation for driving first pile.

(see images following page)



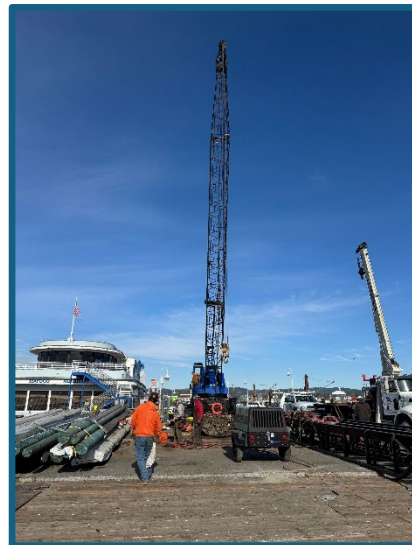
Crane Staged Prior to Walk-Out



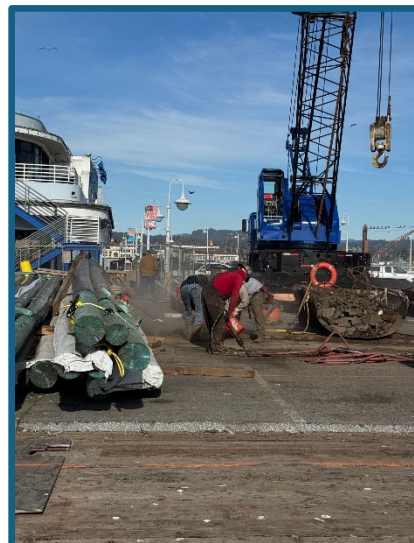
Crane Staged Prior to Walk-Out



"Pier Walker II"



Crane in Position to Drive Pile



Opening Deck Prior to Driving Pile